

**COURSE
GUIDE**
(Level 1 to 3)
2017/18



HELLO

WELCOME TO
**NORTHERN
REGIONAL
COLLEGE**



WELCOME



Congratulations on taking the next step towards building on your education and developing your future career. We have carefully selected each of the courses listed in this guide as programmes that offer real value to our students and are relevant to the needs of employers or to progression within education. Whether you are a recent school leaver, or you are returning to study after time away, this guide summarises the excellent opportunities available across our six campuses.

Whilst at the College you will most closely interact with our professional teaching staff. All of our lecturers have specialist expertise in their subject areas and many continue to work as professionals in industry. This connection with industry is important to us and as a College we work closely with businesses to ensure our provision is relevant and reflects the needs of employers. No matter what subject or qualification you choose, your course will be geared towards helping you to enhance your career prospects.

If you already know what subject you are interested in you will find more detailed information on our website, so please make sure you visit www.nrc.ac.uk to find out more.

If you are still trying to decide on what to do next please make use of the careers service we offer across our campuses. Why not come in and talk to one of our careers advisors who can discuss the options available to you? We would be delighted to see you.

I hope you find this guide useful and informative – and I look forward to welcoming you as student of Northern Regional College in September 2017.

Professor Terri Scott
Principal/Chief Executive



75.5%

01

DID YOU KNOW?

ACCEPTED
to university

of  OUR
graduates were



in 2016



CONTENTS

- 4 **Welcome**
- 8 **Contents**
- 10 **Study at Your Northern Regional College**
- 16 **Open Days**
- 18 **Our Campuses**
- 22 **Facilities**
- 26 **Students' Union**
- 28 **Supporting Students**
- 30 **How You Will Learn**
- 34 **Digital Learning**
- 38 **Qualifications**
- 44 **Guide to Qualifications and Levels**
- 46 **How to Apply**
- 50 **Fees and Funding**
- 54 **Entry Requirements**
- 58 **Courses**

STUDY AT YOUR NORTHERN REGIONAL COLLEGE

At Northern Regional College you can shape the direction of your education and career. Our range of qualifications and wide selection of subject areas gives you choice in your learning. Whether you want to work towards a trade or progress to university you will find a course for your needs.

We offer Apprenticeships, GCSE equivalent courses (Level 2 BTEC Diploma) and A Level equivalent courses (Level 3 BTEC Extended Diploma) and Access to University courses.



Excellent quality of teaching and learning

Many of our lecturers continue to work as industry professionals and offer extensive knowledge and experience of their specialist area.



Practical work-based structure

All courses are designed to provide you with the skills required to meet the needs of employers.



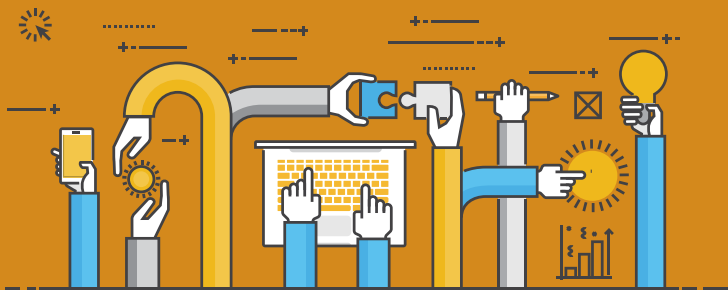
Earn while you learn

Apprenticeships provide the opportunity for paid employment while you study.



Financial Support

You may be eligible for a travel pass or other financial support such as EMA, hardship grant, childcare assistance. See website for details www.nrc.ac.uk.



Flexibility

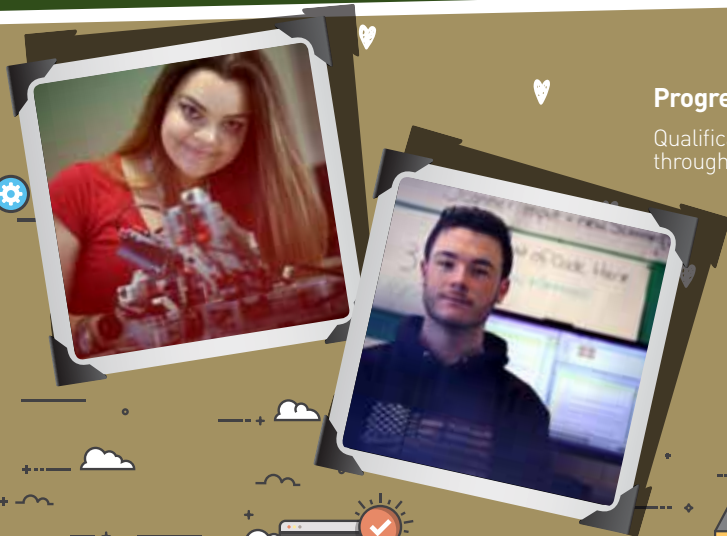
We offer students excellent levels of qualifications and pathways which can lead to university entrance.





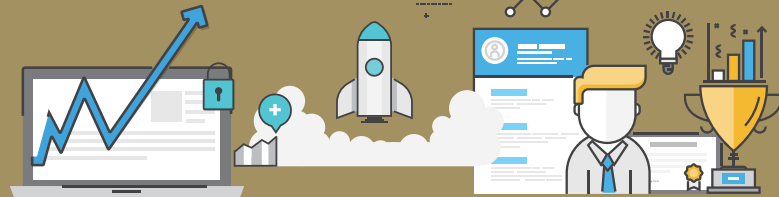
Modern hardware, equipment and computer software

All subject areas are equipped with the latest equipment and technology to ensure you are trained to industry standard.



Progression

Qualifications are available from Level 1 through to Level 6, all within the College.



Excellent industry links

The College has excellent links with local, national and international employers who provide students with valuable placement opportunities, guest lectures and site visits.

OPEN DAYS

Open Days are a great opportunity to visit your local campus, speak to our friendly staff and find out more about our courses and facilities.

Ballymena

(Farm Lodge and Trostan Avenue)
Wednesday 22 February 2017
4pm – 8pm

Ballymoney

Thursday 23 February 2017
4pm – 8pm

Coleraine

Monday 20 February 2017
4pm – 8pm

Magherafelt

Tuesday 21 February 2017
4pm – 8pm

Newtownabbey

Wednesday 22 February 2017
4pm - 8pm
Saturday 25 February 2017
10am - 1pm



NOTES

OUR CAMPUSES



Over

12,000

elearning user accounts

02

DID YOU KNOW?

UP TO 20,000

online resources accessed

PER DAY



Libraries

Each campus has its own library. Our library service has all the resources you will need to succeed in your course including computers, 35,000 printed books, over 500 e-books and an online catalogue with access to more than 20,000 electronic journals and e-databases.



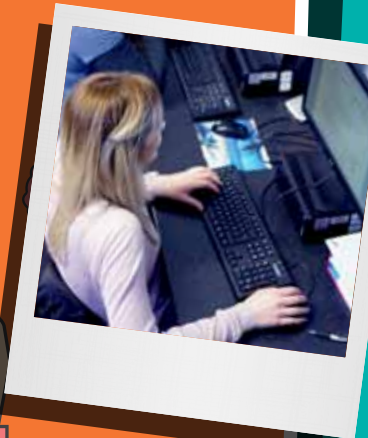
Learning Online

Each campus has access to computers and printers. You will also be able to access the College off-campus through the student portal and with a College email address. Many subject areas also deliver teaching online which you can access on or off campus.

FACILITIES

Teaching Facilities

You will be taught with the equipment and facilities needed to provide you with a high quality learning experience in your subject area. Our campuses are equipped with everything from standard teaching rooms to a wide variety of specialist equipment including engineering, sports and fitness, car maintenance, beauty, graphic design and science laboratories.



Seating Areas

Comfortable seating areas are available around the campuses for meeting friends and relaxing outside of class.



Free Wi-Fi

Free Wi-Fi is available at each campus. There are also designated Wi-Fi hotspots in each library for personal devices.



Free Car Parking

Free parking is available to students at all campuses.



Canteen

Each campus has a canteen offering a selection of affordable snacks, sandwiches and meals. Meal deals, daily specials and healthy options are available throughout the week.





STUDENTS' UNION

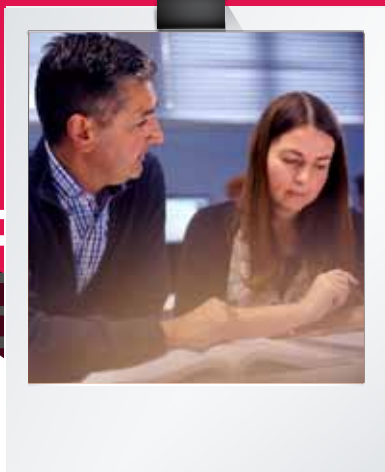
As a student at Northern Regional College you are automatically a member of the Students' Union. The Union represents students across all campuses and is governed by the College's Students' Council. The Council consists of elected campus officers, the Vice-President and Students' Union President. The Students' Union is affiliated to the National Union of Students/Union of Students in Ireland (NUS-USI).

As a member you will be eligible for:

- Membership of clubs and societies.
- All Union activities and events.
- Voting in College elections and attend meetings.
- Standing for election for any Students' Union officer post.
- The opportunity to sit on the College Board of Governors and associated sub-committees.

Careers Advice and Guidance

A professional advice and guidance service is available to all students. Whatever your career aspirations, our careers team are available to help you with career planning, job applications or completing your College or UCAS application.



SUPPORTING STUDENTS

Education Support

We provide a comprehensive package of support mechanisms to enable students with a medical condition, learning difficulty and/or disability to participate and progress with their studies at the College.

Counselling Services

Beginning any new course can be a stressful time. Professionally trained Counsellors are available to help students with any issues they may have.

HOW YOU WILL LEARN

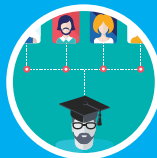


Teaching and assessment methods vary but most courses are taught through traditional lectures and practical sessions. You may be taught on campus, by eLearning, or a combination of both (blended learning).

Teaching methods may include:



Guest lectures from industry professionals or specialists



One-to-one sessions with your tutor



Workshops



Case studies



Directed learning



Independent study



Visits e.g. to museums and exhibitions or into industry



Productions



Design studio work



Laboratory work





Assessment methods may include:



Formal examinations



Practical exercises



Reports



Observation of skills



Coursework



Online examinations



Written assignments



Real-life industry projects



Reports



Essays



Case studies



Presentations

Industrial Visits

We have excellent industrial links with local, national and international employers who provide students with valuable **seminars, visits and placement opportunities.**



INDUSTRY VISITOR

NORTHERN
National College **nrc**



667890123456



DIGITAL LEARNING

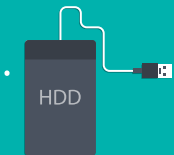
Teaching on many of our courses is delivered partly online and can be completed at home or on campus. We have invested heavily in online teaching facilities and computer equipment to provide our students with a high quality learning experience.

We are continually refining, expanding and enhancing our online course delivery, offering the flexibility of studying parts of your course online.

Access course material online 24/7

Live virtual classrooms

Experience interactive and engaging online programmes



Enhance and develop your digital skills



Balance study, work and family commitments



QUALIFICATIONS

Access to University

- 📅 Studied over 1 year, full-time
- 👤 A modularised course which is set at A level standard.

Level 3 BTEC/Cambridge Extended Diploma (A Levels equivalent)

- = Equivalent to 3 A Levels
- 📅 Studied over 2 years, full-time
- 📍 Practical work related course
- 👤 Provides progression to Higher Education courses at Colleges and/or universities.

Level 3 BTEC 90 Credit Diploma

- = Equivalent to 1.5 A Levels
- 📅 Studied over 1 year, full-time
- 📍 Practical work-related course
- 👤 Successful students automatically progress to the second year of the Level 3 BTEC Extended Diploma.

Level 3 BTEC Subsidiary Diploma

- = Equivalent to 1 A Level
- 📅 Studied over 1 year, full-time
- 📍 Practical work-related course
- 👤 Successful students automatically progress to the second year of the Level 3 BTEC Extended Diploma.




Level 2 BTEC Diploma (GCSE equivalent)

- = Equivalent to 4 GCSEs at Grade C or above
- 📅 Studied 1 year, full-time
- 👤 Provides progressions to Level 3 course.

Apprenticeships are a great way to start your career by giving you training in the workplace combined with learning at College. You have the opportunity to work and earn a wage while working towards nationally recognised qualifications.

ApprenticeshipsNI is primarily aimed at students already in paid employment aged 16-24 years (some funding may be available for those aged 25 years and older). Training for Success is for non-employed students aged 16 and 17 years (up to 22 years for those who require additional support and 24 years for those in care) to undertake vocational work-based education and training and progress to higher level training, further education and/or employment.

ApprenticeshipsNI

-  Apprenticeships offer training to people aged 16 and over who are employed for a minimum of 21 hours per week.
-  Your training support officer will meet with you and your employer to discuss your training needs and develop a training programme for you.
-  Usually you are with your employer four days a week and at College one day a week.



Training for Success

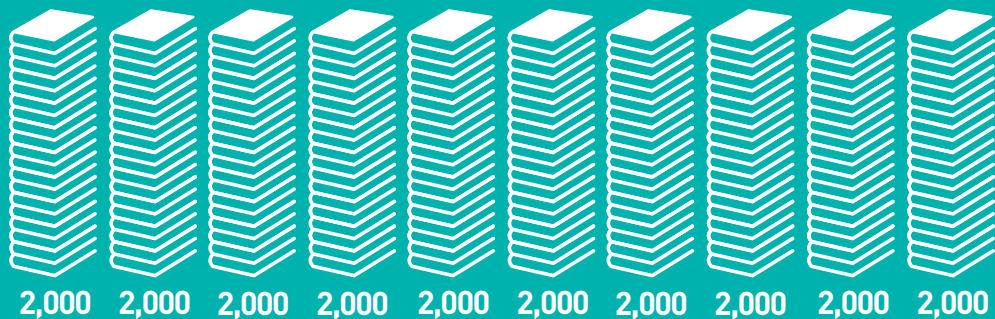
-  A work-based learning programme for school leavers aged 16-17 years of age, (up to 22 years of age for those who require additional support and 24 years of age for those in care).
-  Provides young people with recognised skills and qualifications required for industry and future employment.
-  Provides progression to higher level training, further education and/or employment.
-  Special Features include - Non means tested Education Maintenance Allowance (EMA) of £40 per week. Trainee bonus payments up to £360 over 2 years. You will receive a Personal Training Plan (e-PTP).



UP
TO

20,000

03 DID YOU KNOW?



Enrolments
every year

GUIDE TO QUALIFICATIONS AND LEVELS



Action	What do you need?	What can you study?	What can you do next?
Level E	<ul style="list-style-type: none"> No entry level qualifications, other than a willingness to learn 	<ul style="list-style-type: none"> Entry Level Award Essential Skills Skills for Working Life 	<ul style="list-style-type: none"> Employment Further Training Level 1 Course
Level 1	<ul style="list-style-type: none"> Three GCSEs at Grade E or above 	<ul style="list-style-type: none"> BTEC Introductory Diploma BTEC Foundation First Certificate City & Guilds Level 1 Entry to Employment (e2e) NVQ Level 1 Foundation Diploma 	<ul style="list-style-type: none"> Employment Further Training Level 2 course
Level 2	<ul style="list-style-type: none"> Four GCSEs at Grade D or above 	<ul style="list-style-type: none"> BTEC Level 2 Diploma City & Guilds Level 2 NVQ Level 2 Higher Diploma 	<ul style="list-style-type: none"> Employment Further Training Level 3 course

Action	What do you need?	What can you study?	What can you do next?
Level 3	<ul style="list-style-type: none"> No formal qualification Four or five GCSEs at Grade C or above normally including Maths and English Six GCSEs at Grade C or above normally including Maths and English 	<ul style="list-style-type: none"> Access to Higher Education* BTEC 90 Credit/ Extended Diploma City & Guilds Level 3 NVQ Level 3 A Levels 	<ul style="list-style-type: none"> Employment Further Training Higher Education Level 4-5 course Higher Level Apprenticeship
Level 4	<ul style="list-style-type: none"> 48 UCAS points or 120 UCAS points [old tariff] plus five GCSEs at Grade C or above 	<ul style="list-style-type: none"> Combined Modular Extended Degree [CMED] HNC/HND Foundation Degree Higher Level Apprenticeship 	<ul style="list-style-type: none"> Employment Further Training Higher Education, for example top up to a Bachelor [BA, BSc] degree or post graduate studies.

* Although students would have to display evidence of maturity and the ability to benefit from the course. Students are advised that this course is best suited to the needs of adults and mature students. Applicants will be assessed to ensure they have sufficient literacy and numeracy skills, but we do advise checking with universities to see if GCSEs are required. Please note that every effort has been taken to ensure that this course guide was correct at the time it was printed. However, whilst every effort is made to run all of the courses in this course guide, the college reserves the right to review or cancel courses if they prove to be non-viable for any reason which lies outside its control.



HOW TO APPLY

You can apply online NOW for September 2017 entry.

Applications are made through our website

www.nrc.ac.uk

follow these steps:



Step One
Visit
Find
Login
Apply
Information Event
Test
Offer
Results

Visit www.nrc.ac.uk

Step Two
Visit
Find
Login
Apply
Information Event
Test
Offer
Results

Find the course you are applying to and add it to the basket.

Step Three
Visit
Find
Login
Apply
Information Event
Test
Offer
Results

Create an account with a unique login using a personal email address and password (do not use your school email address). You must check this email account regularly for updates and communications about your application.

Step Four
Visit
Find
Login
Apply
Information Event
Test
Offer
Results

Complete and submit your application. You will receive an automatic reply by email.



Step Five

- Visit
- Find
- Login
- Apply
- Information Event
- Test
- Offer
- Results

You will be invited to attend an information event. This will take place from April 2017 until GCSE results day, Thursday 24 August 2017. It is essential you check your personal email account on a regular basis as this will be the only method of communication; alternatively you can login to the admissions portal to check details.

Step Six

- Visit
- Find
- Login
- Apply
- Information Event
- Test
- Offer
- Results

For Apprenticeships NI/Training for Success (Work Based Learning) you may also be required to complete an aptitude test.



Step Seven

- Visit
- Find
- Login
- Apply
- Information Event
- Test
- Offer
- Results

Applicants who attend an information event between April 2017 and August 2017 may be made a conditional offer, subject to meeting entry requirements and any other enhanced criteria.

Step Eight

- Visit
- Find
- Login
- Apply
- Information Event
- Test
- Offer
- Results

If your offer is conditional on your examination results, you must bring them to the College on GCSE results day, Thursday 24 August 2017. Results will be verified and final offers made. All applicants with conditional offers and those who have not yet attended an information event should attend.

ApprenticeshipsNI/Training for Success (Work Based Learning) applicants must also bring a copy of your National Insurance Number and proof of ID along with your results.

For Training for Success you will also be required to present a valid Training Credit which are issued by Department for the Economy (Dfe) Careers Advisors following an interview to determine training level.

Your online account will allow you to track the status of your application and check your details and course offer.

If you need any help with your online application email admissions@nrc.ac.uk

FEES AND FUNDING

Student must pay an amenities fee of £25 (This does not apply to Training/Apprenticeships) when enrolling on a full-time course.

A range of financial support is listed here. Please check the eligibility criteria and closing dates.

For further information contact Student Finance on 028 2563 6254.



EMA

For Further Education students aged between 16 and 19 on or between 2 July and 1 July. This award is means-tested on household income and students may receive payment of £30 per week.



Travel Pass

Students must be 18 or younger on 1 July and on a full-time Further Education course. Other criteria and age restrictions may apply and you should contact your local Education and Library Board for further information.





Further Education Award

Students must be 19 or older on 1 July. This is a means-tested award for full-time students and usually has a closing date.

Hardship Grant

Students must be 18 or older at the start of the academic year. Assistance is means-tested and students must have applied to all other sources of finance that are available to them in the first instance. This fund is administered by the College.



Care to Learn Scheme

If you have care of a child then you may be able to get help with childcare and travel costs. You must be aged between 16 and 19 at the start of the course. This fund is administered by the College.

Childcare Assistance

Help with childcare costs may be available to both further and higher education students through Student Finance NI.



Other sources of help

There may be other sources of support available to you, such as free school meals, Disabled Student Allowance, Parents' Learning Allowance etc. Please refer to our website for further details.



ENTRY REQUIREMENTS



ApprenticeshipNI

See www.nrc.ac.uk for course specific entry requirements.

Level 2 BTEC Diploma

4 GCSEs Grade D-G or above, or equivalent.*

Level 1 Diploma

No formal entry requirements.

Level 3 BTEC 90 Credit Diploma/ Subsidiary Diploma/ Extended Diploma

4 GCSEs at Grade C or above, or equivalent*

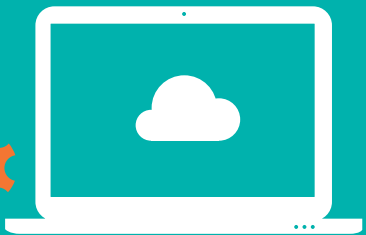
Training for Success

See www.nrc.ac.uk for course specific entry requirements.

Access to University

Must normally be 19 years of age or over at the date of entry to the course. Must provide evidence of basic competence in written, oral communication and numeracy skills. Students are asked to undertake a short, written assessment regarding this.

*Some courses may vary. Check our website www.nrc.ac.uk for the specific entry requirements for each course.



04

DID YOU KNOW?



Over

300

courses

1900

modules

over 2300

resources online



COURSES

Subject (by Campus)	Level	Duration	Code	Subject (by Campus)	Level	Duration	Code
Antrim, CAFRE, Greenmount Campus				Ballymena (Trostan Avenue)			
Sport	Level 3 BTEC Extended Diploma	2 Years	C01288 ONF1A	Access Diploma in Social Sciences (NEW)	Level 3 Access to University	1 Year	C01665 TAF1A
				Administration (Business Professional)	Level 3	2 Years	C01029 TAF1A
				Art and Design	BTEC Level 3 Foundation Diploma	1 Year	C01240 TAF1A
				Aspire2Work	Inclusive Learning	1 Year	C00723 TAF1A
				Barbering	Level 2 NVQ Diploma	1 Year	C01715 TAF1A
				Beauty Therapy	Level 2 Diploma	1 Year	C01206 TAF1A
				Beauty Therapy Techniques	Level 3 Diploma	1 Year	C01207 TAF1A
				Business with Digital Technologies (NEW)	Level 2 Cambridge Technical Diploma	1 Year	C01673 TAF1A

Subject (by Campus)	Level	Duration	Code	Subject (by Campus)	Level	Duration	Code
Ballymena (Trostan Avenue)				Ballymena (Trostan Avenue)			
Business with IT	Level 3 Diploma in Business and Level 3 Subsidiary Diploma in IT	2 Years	C01467 TAF1A	Hairdressing for Colour Technician	Level 3 Diploma	1 Year	C00706 TAF1A
				Health and Social Care	Level 2 Diploma	1 Year	C01934 TAF1A
Children's Care, Learning and Development	Level 2 Diploma	1 Year	C01920 TAF1A	Health and Social Care	Level 3 BTEC Extended Diploma	2 Years	C01032 TAF1A
Children's Care, Learning and Development	Level 3 BTEC National Diploma	2 Years	C00068 TAF1A	Healthy Living (NEW)	Level 2 Diploma	1 Year	C01710 TAF1A
				Plumbing	Training/Apprenticeship		APLUMB TAF1A
Creative Media Production	Level 3 BTEC Extended Diploma	2 years	C01061 TAF1A	Professional Cookery (Introduction)	Level 1 Diploma	1 Year	C01041 TAF1A
Fashion Design and Production	Level 3 National Diploma	2 Years	C01624 TAF1A	Professional Cookery	Level 2 NVQ Diploma	1 Year	C01568 TAF1A
Hairdressing	Level 2 NVQ Diploma	1 year	C01714 TAF1A	Route2Work	Inclusive Learning	1 Year	C01243 TAF1A

Subject (by Campus)	Level	Duration	Code	Subject (by Campus)	Level	Duration	Code
Ballymena (Farm Lodge)				Ballymena (Farm Lodge)			
Applied Science (Medical Science)	Level 3 BTEC Subsidiary Diploma Leading to Year 2 of Level 3 BTEC Extended Diploma	1 or 2 Years	C01334 FLF1A	Information and Creative Technology	Level 2 First Extended Certificate	1 Year	C01347 FLF1A
				IT	Level 3 BTEC 90 Credit Diploma Leading to Year 2 of Level 3 BTEC Extended Diploma	1 or 2 Years	C00708 FLF1A
Brickwork	Training/Apprenticeship		ABRICK FLF1A				
Building Design, Technology and Management	Level 3 BTEC Extended Diploma	2 Years	C01023 FLF1A	Joinery	Training/Apprenticeship		AJOINR FLF1A
Engineering	Training/Apprenticeship		AENGIN FLF1A	Light Vehicle Maintenance and Repair	Level 3 Extended Diploma	2 Years	C01291 FLF1A
Electrical Engineering	Training/Apprenticeship		AELENG FLF1A	Motor Vehicle	Training/Apprenticeship		AMOVEH FLF1A
Electrical Installation	Training/Apprenticeship		AELINS FLF1A	Plastering	Training/Apprenticeship		APLAST FLF1A
Engineering	Level 3 BTEC Extended Diploma	2 Years	C01080 FLF1A	Public Services	Level 3 Extended Diploma	2 Years	C01402 FLF1A
				Sport	Level 2 First Extended Certificate	1 Year	C01600 FLF1A

Subject (by Campus)	Level	Duration	Code	Subject (by Campus)	Level	Duration	Code
Ballymena (Farm Lodge)				Ballymoney			
Sport	Level 3 BTEC 90 Credit Diploma Leading to Year 2 of Level 3 BTEC Extended Diploma	2 Years	C01287 FLF1A	Access to Opportunity	Level 2	1 Year	C01409 BMF1A
				Animation	Level 3 Cambridge Technical Extended Diploma in Media	2 Years	C01627 BMF1A
Sport (IFA) (NEW)	Level 3 BTEC 90 Credit Diploma Leading to Year 2 of Level 3 BTEC Extended Diploma	2 Years	C01287 FLF1B	Animal Care (NEW)	Level 2 Diploma	1 Year	C01172 BMF1A
				Beauty Therapy	Level 2 Diploma	1 Year	C01206 BMF1A
Travel and Tourism	Level 3 BTEC 90 Credit Diploma Leading to Year 2 of Level 3 BTEC Extended Diploma	1 or 2 Years	C00952 FLF1A	Beauty Therapy Techniques	Level 3 Diploma	1 Year	C01207 BMF1A
				Business with Digital Technologies (NEW)	Level 2 Cambridge Technical Diploma	1 Year	C01673 BMF1A
Tourism Events Assistant (NEW)	Level 2 Technical Certificate	1 Year	C01718 FLF1A	Business with IT	Level 3 Diploma	1 Year	C01735 BMF1A
				Children's Care, Learning and Development	Level 2 Diploma	1 Year	C01920 BMF1A

Subject (by Campus)	Level	Duration	Code	Subject (by Campus)	Level	Duration	Code
Ballymoney				Ballymoney			
Children's Care, Learning and Development	Level 3 BTEC National Diploma	2 Years	C00068 BMF1A	Music Technology	Level 3 Cambridge Technical Extended Diploma in Performing Arts	2 Years	C01586 BMF1B
Creative Digital Media Production	Level 1/Level 2 First Diploma	1 Year	C01515 BMF1A	Performing Arts	Level 3 Cambridge Technical Extended Diploma	2 Years	C01586 BMF1A
Creative Media Production, Interactive Media	Level 3 BTEC Extended Diploma	2 Years	C01062 BMF1A				
Creative Media Production, TV and Film	Level 3 BTEC Extended Diploma	2 Years	C01142 BMF1A	Professional Cookery (Introduction)	Level 1 Diploma	1 Year	C01041 BMF1A
Hairdressing	Level 2 NVQ Diploma	1 Year	C01714 BMF1A	Professional Cookery	Level 2 NVQ Diploma	1 Year	C01568 BMF1A
Hairdressing for Colour Technicians	Level 3 Diploma	1 Year	C00706 BMF1A	Professional Cookery (Preparation and Cooking)	Level 3 NVQ Diploma	1 Year	C01106 BMF1A
Joinery	Training/ Apprenticeship		AJOIN BMF1A	Route2Work	Inclusive Learning	1 Year	C01243 BMF1A
				Work Ready	Inclusive Learning	1 Year	C01242 BMF1A

Subject (by Campus)	Level	Duration	Code	Subject (by Campus)	Level	Duration	Code
Coleraine				Coleraine			
Access Diploma in Social Sciences	Level 3 Access to University	1 Year	C01665 CRF1A	Construction (Property and Estates Management) (NEW)	Level 2 First Diploma	1 Year	C01724 CRF1A
Applied Science	Level 3 BTEC Subsidiary Diploma Leading to Year 2 of Level 3 BTEC Extended Diploma	2 Years	C01334 CRF1A	Digital Games Development	Level 3 BTEC National Extended Diploma in Creative Media Production (Digital Games)	2 Years	C01623 CRF1A
Building Design, Technology and Management	Level 3 BTEC Extended Diploma	2 Years	C01023 CRF1A	Engineering	Level 2 First Diploma	1 Year	C01487 CRF1A
Business	Level 3 90 Credit Diploma Leading to Year 2 of Level 3 BTEC Extended Diploma	1 or 2 Years	C01960 CRF1A	Engineering	Level 3 BTEC Extended Diploma	2 Years	C01080 CRF1A
				Health and Social Care	Level 2 Diploma	1 Year	C01934 CRF1A
				Health and Social Care	Level 3 BTEC Extended Diploma	2 Years	C01032 CRF1A

Subject (by Campus)	Level	Duration	Code	Subject (by Campus)	Level	Duration	Code
Coleraine				Coleraine			
Information and Creative Technology	Level 2 First Extended Certificate	1 Year	C01347 CRF1A	Sport and Exercise Sciences	Level 3 BTEC 90 Credit Diploma Leading to Year 2 of Level 3 BTEC Extended Diploma	1 or 2 Years	C01289 CRF1A
IT	Level 3 BTEC 90 Credit Diploma Leading to Year 2 of Level 3 BTEC Extended Diploma	1 or 2 Years	C00708 CRF1A				
Joinery	Training/ Apprenticeship		AJOINR CRF1A	Sport	Level 3 BTEC 90 Credit Diploma Leading to Year 2 of Level 3 BTEC Extended Diploma	1 or 2 Years	C01287 CRF1A
Motor Vehicle	Training/ Apprenticeship		AMOVEH CRF1A				
Sport	Level 2 First Extended Certificate	1 Year	C01600 CRF1A	Travel and Tourism	Level 1/Level 2 First Extended Certificate	1 year	C01582 CRF1A
				Travel and Tourism	Level 3 BTEC 90 Credit Diploma Leading to Year 2 of Level 3 BTEC Extended Diploma	1 or 2 Years	C00952 CRF1A

Subject (by Campus)	Level	Duration	Code	Subject (by Campus)	Level	Duration	Code
Magherafelt				Magherafelt			
Access Diploma in Social Sciences (NEW)	Level 3 Access to University	1 Year	C01665 MCF1A	Children's Care, Learning and Development	Level 2 Diploma	1 Year	C01920 MCF1A
Aspire2Work	Inclusive Learning	1 Year	C00723 MCF1A				
Beauty Therapy (NEW)	Level 2 Diploma	1 Year	C01206 MCF1A	Children's Care, Learning and Development	Level 3 BTEC National Diploma	2 Years	C00068 MCF1A
Brickwork	Training/ Apprenticeship		ABRICK MCF1A	Digital Marketing	Level 3 Diploma	1 Year	C01669 MCF1A
Business with Digital Technologies (NEW)	Level 2 Cambridge Technical Diploma	1 Year	C01673 MCF1A	Engineering	Level 2 First Diploma	1 Year	C01487 MCF1A
				Engineering	Level 3 BTEC Extended Diploma	2 Years	C01080 MCF1A
Business with IT	Level 3 Diploma in Business and Level 3 Subsidiary Diploma in IT	2 Years	C01467 MCF1A	Hairdressing	Level 2 NVQ Diploma	1 Year	C01714 MCF1A

Subject (by Campus)	Level	Duration	Code	Subject (by Campus)	Level	Duration	Code
Magherafelt				Magherafelt			
Hairdressing for Colour Technicians	Level 3 Diploma	1 Year	C00706 MCF1A	Sport	Level 3 BTEC 90 Credit Diploma Leading to Year 2 of Level 3 BTEC Extended Diploma	2 Years	C01287 MCF1A
Health and Social Care	Level 3 BTEC Extended Diploma	2 Years	C01032 MCF1A	Sport (GAA Academy)	Level 3 BTEC 90 Credit Diploma Leading to Year 2 of Level 3 BTEC Extended Diploma	2 Years	C01287 MCF1B
Information and Creative Technology	Level 2 First Certificate	1 Year	C01347 MCF1A				
IT	Level 3 BTEC 90 Leading to Year 2 of Level 3 BTEC Extended Diploma	1 or 2 Years	C00708 MCF1A	Travel and Tourism	Level 1/Level 2 First Extended Certificate	1 Year	C01582 MCF1A
Joinery	Training/Apprenticeship		AJOINR MCF1A	Work Ready	Inclusive Learning	1 Year	C01242 MCF1A
Route2Work	Inclusive Learning	1 Year	C01243 MCF1A				

Subject (by Campus)	Level	Duration	Code	Subject (by Campus)	Level	Duration	Code
Newtownabbey				Newtownabbey			
Access Diploma in Social Sciences (NEW)	Level 3 Access to University	1 Year	C01665 NAF1A	Applied Science (Forensics)	Level 3 BTEC Subsidiary Diploma Leading to Year 2 of Level 3 BTEC Extended Diploma	1 or 2 Years	C01334 NAF1A
Access to Opportunity	Level 2	1 Year	C01409 NAF1A				
Animal Care	Level 2 NPTC Diploma	1 Year	C01172 NAF1A	Aspire2Work	Inclusive Learning	1 Year	C00723 NAF1A
Animal Management	Level 3 NPTC Extended Diploma	2 Years	C01171 NAF1A	Beauty Therapy	Level 2 Diploma	1 Year	C01206 NAF1A
Animation	Level 3 Cambridge Technical Extended Diploma in Media	2 Years	C01627 NAF1A	Beauty Therapy Techniques	Level 3 Diploma	1 Year	C01207 NAF1A
				Brickwork	Training/Apprenticeship		ABRICK NAF1A
Applied Science	Level 1/Level 2 First Extended Certificate	1 Year	C01486 NAF1A	Business with Digital Technologies (NEW)	Level 2 Cambridge Technical Diploma	1 Year	C01673 NAF1A

Subject (by Campus)	Level	Duration	Code	Subject (by Campus)	Level	Duration	Code
Newtownabbey				Newtownabbey			
Business with IT	Level 3 Diploma in Business and Level 3 BTEC Subsidiary Diploma in IT	2 Years	C01467 NAF1A	Creative Digital Media Production	Level 1/ Level 2 BTEC First Diploma	1 Year	C01515 NAF1A
				Creative Media Production, Interactive Media	Level 3 BTEC Extended Diploma	2 Years	C01062 NAF1A
Childcare	Level 1 Diploma	1 Year	C01425 NAF1A	Digital Games Development	Level 3 BTEC National Extended Diploma in Creative Media Production (Digital Games)	2 Years	C01623 NAF1A
Children's Care, Learning and Development	Level 2 Diploma	1 Year	C01920 NAF1A				
Children's Care, Learning and Development	Level 3 Diploma	1 Year	C01921 NAF1A	Engineering	Training/ Apprenticeship		AENGIN NAF1A
Children's Care, Learning and Development	Level 3 BTEC National Diploma	2 Years	C00068 NAF1A	Electrical Installation	Training/ Apprenticeship		AELINS NAF1A
				Electrical Engineering	Training/ Apprenticeship		AELENG NAF1A

Subject (by Campus)	Level	Duration	Code	Subject (by Campus)	Level	Duration	Code
Newtownabbey				Newtownabbey			
Engineering	Level 3 BTEC Extended Diploma	2 Years	C01080 NAF1A	Joinery	Training/ Apprenticeship		AJOINR NAF1A
Hairdressing (NEW)	Level 2 NVQ Diploma	1 Year	C01714 NAF1A	Motor Vehicle	Training/ Apprenticeship		AMOVEH NAF1A
Hairdressing for Colour Technicians	Level 3 Diploma	1 Year	C00706 NAF1A	Performing Arts	Level 1/Level 2 BTEC First Diploma	1 Year	C00776 NAF1A
Health and Social Care	Level 2 Diploma	1 Year	C01934 NAF1A	Performing Arts	Level 3 BTEC Extended Diploma	2 Years	C01072 NAF1A
Health and Social Care	Level 3 BTEC Extended Diploma	2 Years	C01032 NAF1A	Plumbing	Training/ Apprenticeship		APLUMB NAF1A
Information and Creative Technology	Level 2 First Extended Certificate	1 Year	C01347 NAF1A	Route2Work	Inclusive Learning	1 Year	C01243 NAF1A
IT	Level 3 BTEC 90 Credit Leading to Year 2 of Level 3 BTEC Extended Diploma	1 or 2 Years	C00708 NAF1A	Sport	Level 2 First Extended Certificate	1 Year	C01600 NAF1A

Subject (by Campus)	Level	Duration	Code
Newtownabbey			
Sport	Level 3 BTEC 90 Credit Diploma Leading to Year 2 of Level 3 BTEC Extended Diploma	2 Years	C01287 NAF1A
Transition 2Work	Inclusive Learning	1 Year	C01720 NAF1A
Travel and Tourism	Level 1/Level 2 First Extended Certificate	1 Year	C01582 NAF1A
Travel and Tourism	Level 3 BTEC 90 Credit Leading to Year 2 of Level 3 BTEC Extended Diploma	1 or 2 Years	C00952 NAF1A
Work Ready	Inclusive Learning	1 Year	C01242 NAF1A



Enquiries

Website:
www.nrc.ac.uk
Email:
admissions@nrc.ac.uk



Disclaimer

Whilst the College makes every effort to ensure the accuracy of this publication, it reserves the right to alter, add or remove any of the courses, or parts thereof, or any other matters of information referred to in this guide or any other literature, without prior notice.

Please note that the College's website is the most up-to-date source of information regarding courses and fees and we strongly recommend that you always visit the website before making any commitments. All courses are subject to minimum enrolment numbers.

NORTHERN
Regional College **nrc**



**COURSE
GUIDE**
(Level 1 to 3)
2017/18

www.nrc.ac.uk